

# Registered Actively Seeking Work

## June 2015

Statistics Unit: [www.gov.je/statistics](http://www.gov.je/statistics)

 @JsyStats

### Summary

On 30 June 2015:

- on a **seasonally adjusted**<sup>1</sup> basis, the total number of people registered as actively seeking work (ASW) was<sup>2</sup>:
  - 40 higher than the previous month (May 2015);
  - 60 higher than the average (mean) for the preceding three months;
  - 80 lower than a year earlier, June 2014;
- the **non-seasonally adjusted** ASW total was 1,450; this total is 50 higher than in the previous month (May 2015) and 60 lower than twelve months earlier (June 2014);
- the increases in both the seasonally adjusted and non-seasonally adjusted ASW totals were largely driven by a rise in the number of individuals under 21 years of age registered as ASW this month; this age group saw an increase of around 50 individuals compared to the previous month (May 2015);
- **long-term ASW** (registered for more than twelve months) accounted for around one in eight (13%) of the total ASW; the number of long-term ASW (190 individuals) was 10 higher than the previous month (May 2015);
- 190 teenagers (aged 16-19 years) were registered as ASW, 40 higher than the previous month (May 2015) and essentially unchanged from twelve months earlier (June 2014).

### Introduction

Data on people registered as actively seeking work in Jersey is compiled and administered by the Social Security Department. The Statistics Unit independently analyses this anonymised data and publishes a monthly report.

When interpreting the numbers presented, it should be noted that there is no legal requirement for unemployed residents of Jersey to register as actively seeking work (ASW) with the Social Security Department. The numbers shown constitute an informative set of indicators demonstrating the level of individuals actively seeking work in the Island at a given point in time.

The internationally comparable unemployment rate (as defined by the International Labour Organisation, ILO) includes people who are registered and also those who are not registered as unemployed and seeking work. The ILO unemployment rate for Jersey is measured by the Annual Social Survey and the Census; in recent years, the ILO unemployment rate for Jersey has been:

- 4.7% in March 2011, measured by the 2011 Jersey Census; this unemployment rate corresponded to 2,570 people being unemployed and looking for work in March 2011;
- 5.7% in June 2013, measured by the 2013 Jersey Annual Social Survey; this unemployment rate corresponded to 3,200 people being unemployed and looking for work in June 2013;
- 4.6% in June 2014, measured by the 2014 Jersey Annual Social Survey; this unemployment rate corresponded to 2,800 people being unemployed and looking for work in June 2014.

<sup>1</sup> Seasonal adjustment is a statistical technique, which enables examination of the underlying behaviour in a series of data by removing variations associated with the time of year, e.g. Christmas, Easter, academic year.

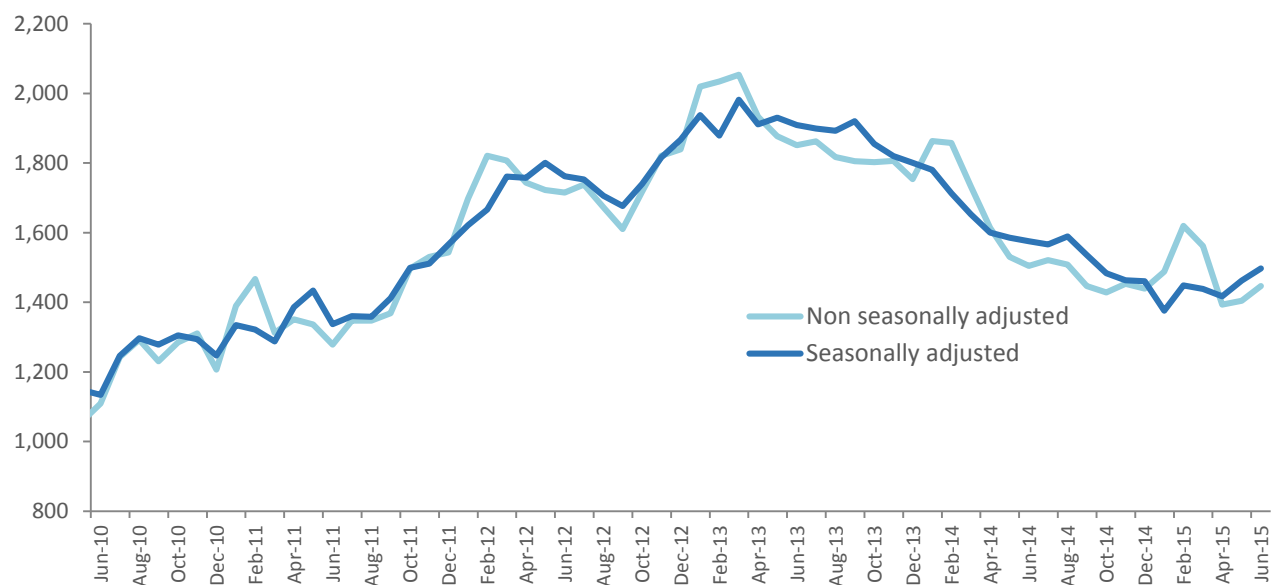
<sup>2</sup> ASW numbers presented in this report are rounded independently to the nearest 10.

## Registered Actively Seeking Work

On 30 June 2015, 1,450 people were registered with the Social Security Department as actively seeking work (ASW). Almost four-fifths (77%) of individuals registered as ASW on this date (corresponding to 1,120 people) were receiving Income Support<sup>3</sup>.

Figure 1 shows the total number of people registered as ASW at the end of each month<sup>4</sup> since June 2010 (monthly data are shown in the [Appendix](#)). The total number registered in June 2015 was 50 higher than in the previous month (May 2015) and 60 lower than twelve months earlier (June 2014).

Figure 1 – Total number of individuals registered as ASW, June 2010 – June 2015



The seasonally adjusted series of the total registered as ASW, in which seasonal and calendar effects are removed, is also shown on Figure 1. From this perspective, the total number of people registered as ASW in Jersey in June 2015 was:

- 40 higher than the previous month, May 2015;
- 60 higher than the average (mean) for the preceding three-month period, March 2015 to May 2015;
- 80 lower than a year earlier, June 2014.

<sup>3</sup> The total number of adults receiving Income Support and not working will be greater than this figure, which represents the number of people receiving Income Support who were registered as ASW on 30 June 2015.

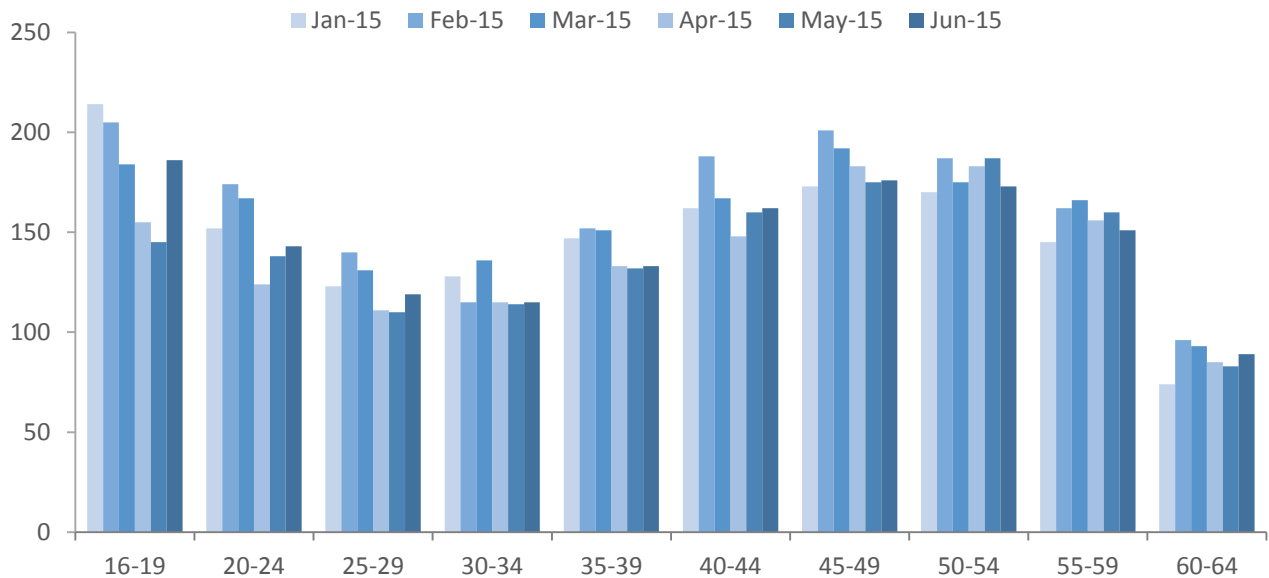
<sup>4</sup> It should be noted that the increases seen in both the seasonally adjusted and non-seasonally adjusted ASW totals in May 2015 compared with the previous month (April 2015) were predominantly due to a change of classification for certain self-employed individuals who are seeking further employment. This administrative change involved the reclassification of 70 such individuals who are now recorded as ASW as they require more income.

## Registered ASW by age

On 30 June 2015, almost a quarter (23%) of people registered as ASW were under 25 years of age (330 individuals); around one in eight (13%) of the total were teenagers, aged 16-19 years (190 individuals).

Figure 2 shows the numbers registered as ASW by age of individuals in each of the last six months, from January 2015 to June 2015.

Figure 2 – Individuals registered as ASW by age, January 2015 – June 2015

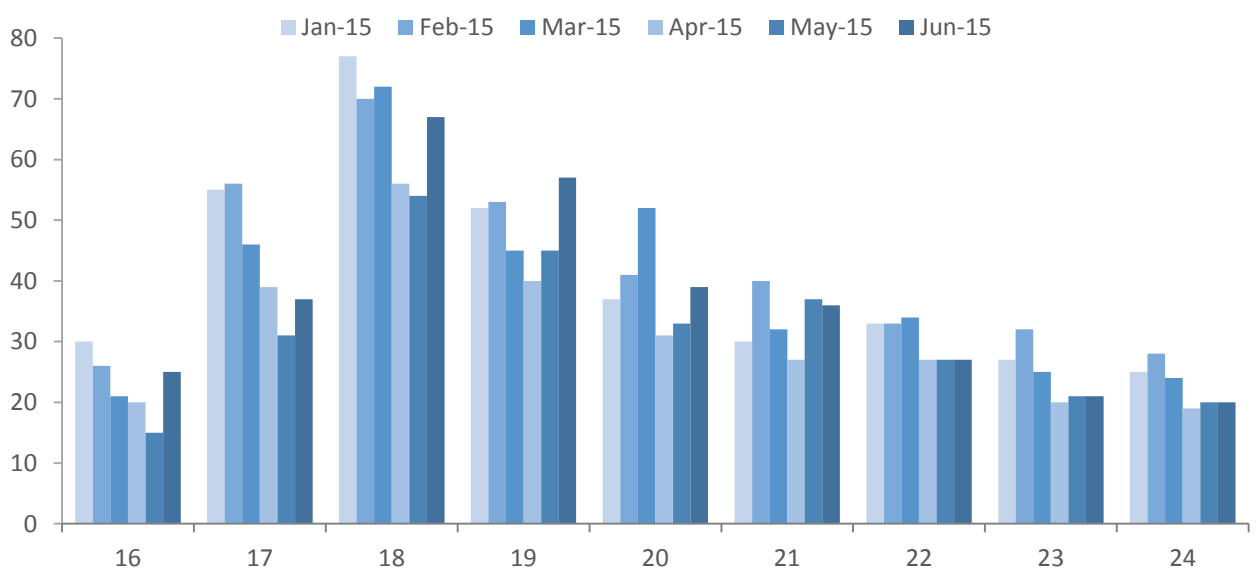


Apart from teenagers (aged 16-19 years), in the latest month all other age groups recorded small changes (of around 10 or fewer) in the number of people registered as ASW compared with the previous month (May 2015).

190 teenagers (aged 16-19 years) were registered as ASW, 40 higher than the previous month (May 2015) and essentially unchanged from twelve months earlier (June 2014).

Figure 3 shows the age distribution for people below 25 years of age who were registered as ASW in the latest six months, from January 2015 to June 2015. Of those people registered as ASW at the end of June 2015, 90 were on the Advance to Work scheme.

Figure 3 – Individuals under the age of 25 registered as ASW, January 2015 - June 2015

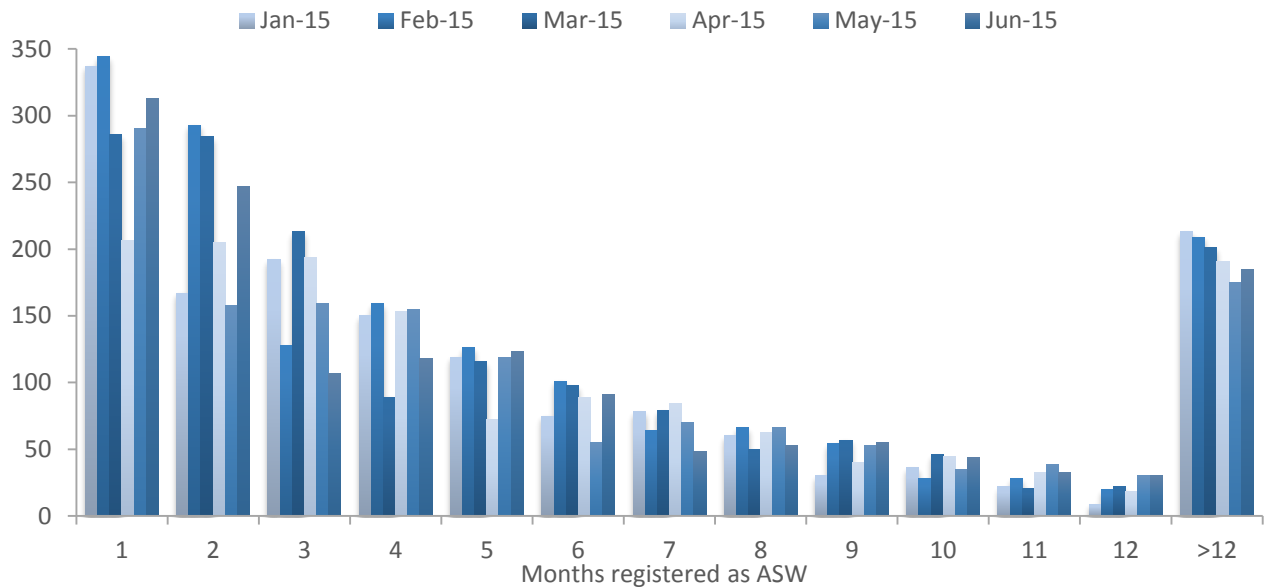


The overall increases in both the seasonally adjusted and non-seasonally adjusted ASW totals observed this month were largely driven by a rise in the number of individuals under 21 years of age registered as ASW this month; this age group saw an increase of around 50 individuals compared to May 2015.

## ASW duration

Almost half (46%) of all people registered as ASW on 30 June 2015 had been registered for three months or less - see Figure 4.

Figure 4 – Registered ASW by length of period registered (months), January 2015 - June 2015



The number of new registrations in June 2015 (310 people) was 20 higher than that recorded in the previous month (May 2015) and at a similar level (10 lower) than a year earlier (June 2014).

## Long-term ASW

On 30 June 2015, there were 190 people who had been registered as ASW for more than twelve months, accounting for around one in eight of the total ASW. The latest number of long-term ASW was 10 higher than the previous month (May 2015) - see Figure 5.

Figure 5 – Long-term ASW, June 2010 – June 2015

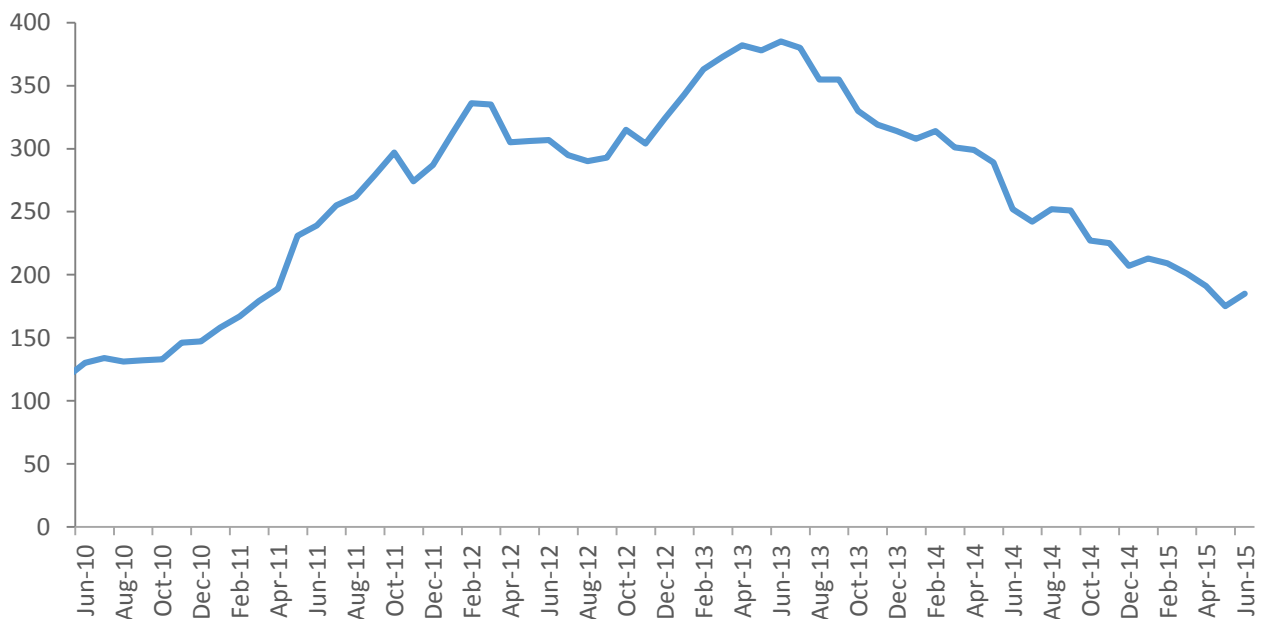
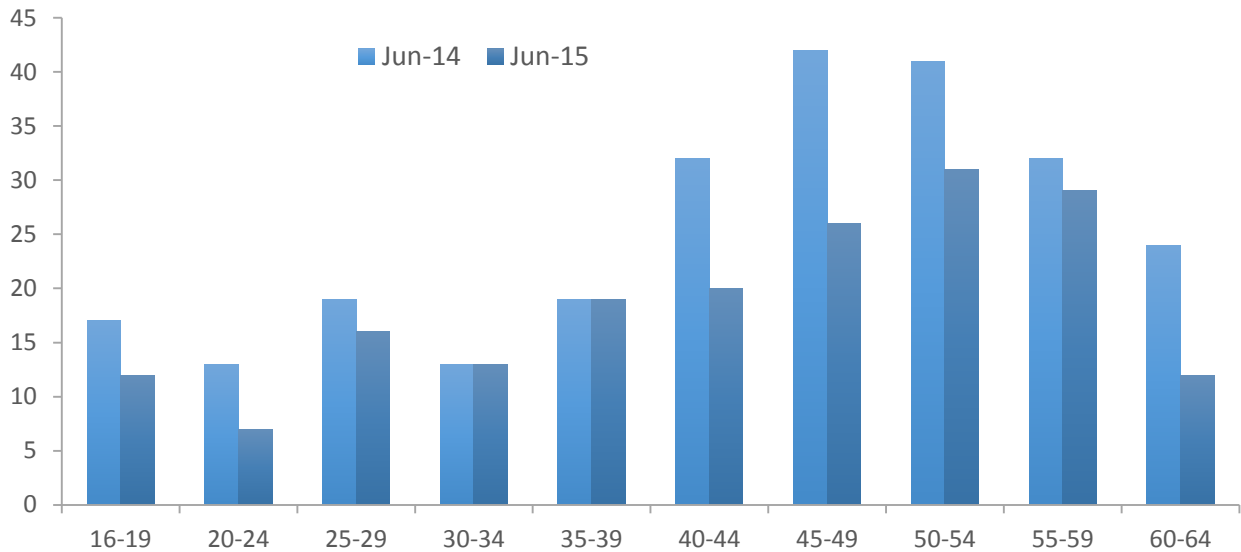


Figure 6 shows the age distribution of the long-term ASW in June 2014 and June 2015. Most age groups have seen falls in the number of long-term ASW during the past twelve months with the exception of the 30-34 and 35-39 age groups, which are essentially unchanged from 12 months ago.

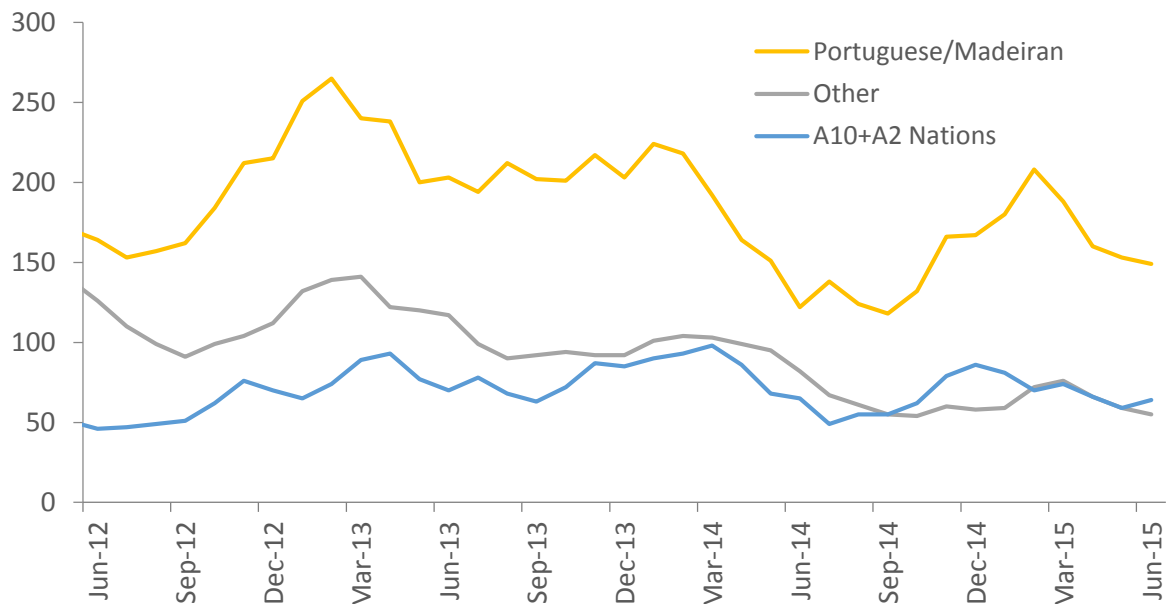
Figure 6 – Long-term ASW by age, June 2014 and June 2015



### Registered ASW by Nationality

On 30 June 2015, over four-fifths (81%) of people registered as ASW were of British/Jersey nationality<sup>5</sup>; there was an increase of 50 such individuals compared with the previous month.

Figure 7 – Individuals registered as ASW by nationality, June 2012 – June 2015



On 30 June 2015 there were:

- 150 individuals of Portuguese/Madeiran nationality registered as ASW, essentially unchanged compared with the previous month (May 2015) and an increase of 30 compared with the corresponding month of 2014;
- 60 individuals from the EU Accession (A10+A2)<sup>6</sup> nations were registered as ASW, essentially unchanged compared with both the previous month (May 2015) and the corresponding month of 2014.

<sup>5</sup> Nationality recorded by the Social Security Department, for the purpose of registering as ASW, is self-reported.

<sup>6</sup> The twelve countries which joined (“gained accession to”) the European Union in May 2004 (Cyprus, the Czech Republic, Estonia, Hungary, Latvia, Lithuania, Malta, Poland, Slovakia and Slovenia) and January 2007 (Bulgaria and Romania).

## Industry

Individuals working in some industries of the economy, notably in the Finance sector, often seek employment through private agencies and do not register with the Social Security Department. Such industries will therefore tend to be under-represented in the ASW numbers.

The last industry of employment was recorded for around nine out of ten people registered as ASW on 30 June 2015:

- almost a quarter (23%) were previously employed in 'Retail and Wholesale, Motor repairs and sales';
- almost a fifth (19%) were previously employed in 'Miscellaneous professional & domestic services';
- 14% were previously employed in 'Banking, Miscellaneous Insurance, Finance and Business';
- 11% were previously employed in 'Hotels, restaurants, pubs and clubs'.

## Notes

The number of people registered as ASW includes people who are on the Advance to Work, Advance Plus and Work Right schemes. The ASW total will also include individuals who are working fewer than the 35 hours per week required under the terms of Income Support (see [Annex](#)); such individuals will simultaneously be working and registered as actively seeking work.

When placing the figures contained in this report in a longer-term historical context it should be recognised that there have been significant changes in the criteria relating to registered ASW in Jersey in recent years. In particular, the introduction of Income Support in 2008 led to greater numbers of individuals who were actively seeking work being included in the registered figures.

People who are registered as actively seeking work receive the support of one of the government employment schemes, which come under the administration of Back to Work:

- Advance to Work – for jobseekers aged 16 - 19 years;
- Advance Plus – for jobseekers aged 20 - 65 years with an industry-specific interest;
- Work Right – for jobseekers with barriers to employment or who have been registered as ASW for 52 weeks or longer;
- Work Zone – for registered jobseekers who are closer to employment;
- Ready for Work – for newly registered jobseekers or jobseekers without a dedicated advisor.

In addition to the development and expansion of these schemes, Back to Work is responsible for:

- the Employment Incentive;
- a dedicated Back To Work Recruitment Team;
- industry and employer specific initiatives.

The aim of Back to Work is to increase access to job opportunities for locally qualified people who are registered as actively seeking work by supporting jobseekers and building a partnership with employers to provide sustainable job opportunities.

## ASW registered underemployment

Individuals who are working fewer hours than they would like or who would like to change their current working situation are classified as underemployed. The International Labour Organisation (ILO) provides two definitions of underemployment<sup>7</sup>:

- *time related underemployed*, which is due to insufficient hours of work;
- *inadequate employment situations*, which are due to other limitations in the labour market, which limit the capacities and well-being of workers.

In Jersey, individuals who are in receipt of Income Support are required to work at least 35 hours per week, unless exempt from full-time work; those who do not meet this requirement must register as Actively Seeking Work. Hence, the ASW total figure includes individuals who are working less than the 35 hours per week required under the terms of Income Support. The number of ASW registered underemployed also includes individuals who are on the Foundations programme and engaged in paid work of 30 hours per week; in June 2015 there were 40 such individuals. Both sets of employed individuals will simultaneously be working and actively seeking work, and are classified as underemployed under the ILO definition of *time related underemployment*.

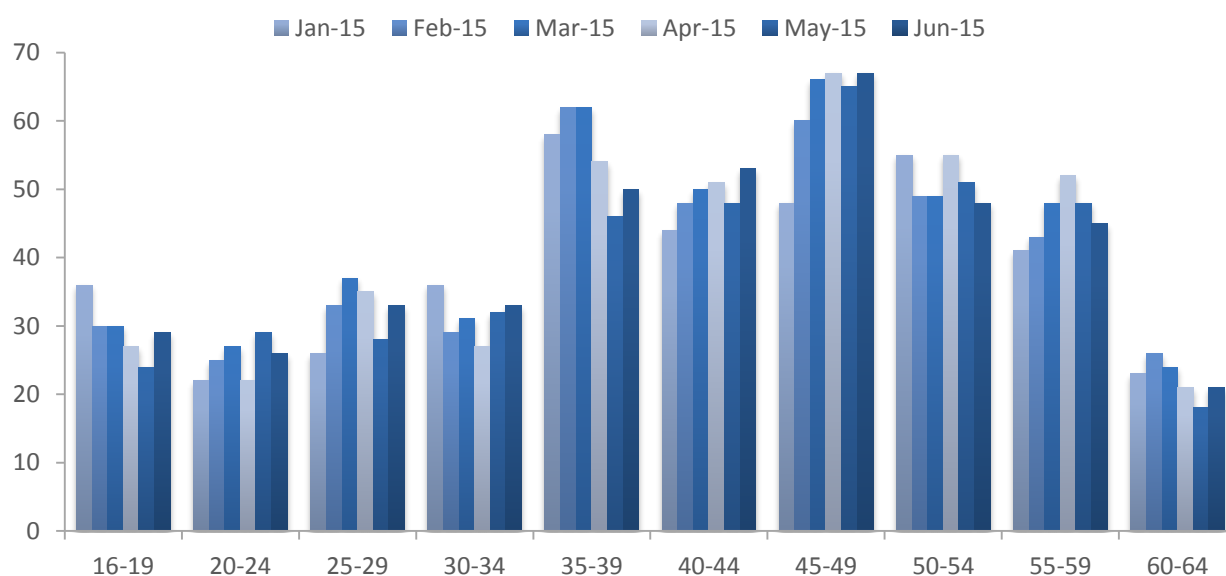
In June 2015, almost three in ten (28%) of all people registered as ASW were underemployed; the numbers of such individuals in each of the last twelve months are shown in Table A1.

Table A1 – Number of ASW registered underemployed, June 2014 – June 2015

	Jun 14	Jul 14	Aug 14	Sep 14	Oct 14	Nov 14	Dec 14	Jan 15	Feb 15	Mar 15	Apr 15	May 15	Jun 15
<b>Individuals</b>	350	360	360	360	370	390	410	390	410	420	410	390	410
<b>Percentage of total ASW</b>	23%	24%	24%	25%	26%	27%	28%	26%	25%	27%	29%	28%	28%

Figure A1 shows the age distribution of people registered as ASW underemployed; nearly half (45%) were aged 45 years or over.

Figure A1 - Age distribution of ASW registered underemployed, January 2015 - June 2015



Of those people who were registered as ASW underemployed in June 2015: over three-fifths (63%) were female; a quarter (25%) had been actively seeking work for more than a year; and 86% were claiming Income Support.

<sup>7</sup> International Labour Organisation: *Resolution concerning the measurement of underemployment and inadequate employment situations*.

## Appendix

Number of individuals registered as ASW, Jan 2010 – June 2015<sup>8</sup>

		Seasonally			
		Male	Female	Total	adjusted total
<b>2010</b>	<b>Jan</b>	770	440	1,200	1,150
	<b>Feb</b>	810	510	1,320	1,180
	<b>Mar</b>	720	450	1,170	1,130
	<b>Apr</b>	710	430	1,140	1,180
	<b>May</b>	670	390	1,060	1,150
	<b>Jun</b>	690	420	1,110	1,130
	<b>Jul</b>	760	490	1,240	1,250
	<b>Aug</b>	810	490	1,290	1,300
	<b>Sep</b>	770	460	1,230	1,280
	<b>Oct</b>	840	450	1,290	1,300
	<b>Nov</b>	870	440	1,310	1,290
	<b>Dec</b>	800	410	1,210	1,250
<b>2011</b>	<b>Jan</b>	910	480	1,390	1,330
	<b>Feb</b>	960	510	1,470	1,320
	<b>Mar</b>	850	460	1,310	1,290
	<b>Apr</b>	870	490	1,350	1,390
	<b>May</b>	820	520	1,340	1,430
	<b>Jun</b>	780	500	1,280	1,340
	<b>Jul</b>	800	550	1,350	1,360
	<b>Aug</b>	820	530	1,350	1,360
	<b>Sep</b>	850	520	1,370	1,410
	<b>Oct</b>	920	570	1,500	1,500
	<b>Nov</b>	960	580	1,530	1,510
	<b>Dec</b>	960	580	1,540	1,570
<b>2012</b>	<b>Jan</b>	1,050	650	1,700	1,620
	<b>Feb</b>	1,130	690	1,820	1,670
	<b>Mar</b>	1,100	700	1,810	1,760
	<b>Apr</b>	1,060	680	1,740	1,760
	<b>May</b>	1,040	680	1,720	1,800
	<b>Jun</b>	1,020	700	1,720	1,760
	<b>Jul</b>	1,020	720	1,740	1,750
	<b>Aug</b>	1,020	650	1,670	1,710
	<b>Sep</b>	970	650	1,610	1,680

		Seasonally			
		Male	Female	Total	adjusted total
<b>2013</b>	<b>Oct</b>	1,020	700	1,720	1,740
	<b>Nov</b>	1,090	730	1,820	1,820
	<b>Dec</b>	1,100	740	1,840	1,870
	<b>Jan</b>	1,210	810	2,020	1,940
	<b>Feb</b>	1,210	820	2,030	1,880
	<b>Mar</b>	1,230	820	2,050	1,980
	<b>Apr</b>	1,140	800	1,930	1,910
	<b>May</b>	1,080	800	1,880	1,930
	<b>Jun</b>	1,040	810	1,850	1,910
	<b>Jul</b>	1,030	840	1,860	1,900
	<b>Aug</b>	990	820	1,820	1,890
	<b>Sept</b>	1,000	800	1,810	1,920
<b>2014</b>	<b>Oct</b>	1,040	770	1,800	1,860
	<b>Nov</b>	1,060	750	1,810	1,820
	<b>Dec</b>	1,030	720	1,750	1,800
	<b>Jan</b>	1,090	770	1,860	1,780
	<b>Feb</b>	1,080	780	1,860	1,710
	<b>Mar</b>	980	760	1,730	1,650
	<b>Apr</b>	900	720	1,610	1,600
	<b>May</b>	840	700	1,530	1,590
	<b>Jun</b>	790	710	1,510	1,580
	<b>Jul</b>	780	740	1,520	1,570
	<b>Aug</b>	780	720	1,510	1,580
	<b>Sep</b>	750	700	1,450	1,540
<b>2015</b>	<b>Oct</b>	760	670	1,430	1,480
	<b>Nov</b>	780	680	1,450	1,460
	<b>Dec</b>	760	680	1,440	1,460
	<b>Jan</b>	790	700	1,490	1,380
	<b>Feb</b>	870	760	1,620	1,450
	<b>Mar</b>	820	740	1,560	1,440
	<b>Apr</b>	710	680	1,390	1,420
	<b>May</b>	730	670	1,400	<sup>(r)</sup> 1,460
	<b>Jun</b>	730	720	1,450	1,500

<sup>(r)</sup> = Data Revised

<sup>8</sup> Numbers are rounded independently to the nearest 10; hence, components may not sum to totals.